

EARTH HOUR CITY CHALLENGE (EHCC)



S SHAH ALAM TREES FOR LIFE



TABLE OF CONTENT

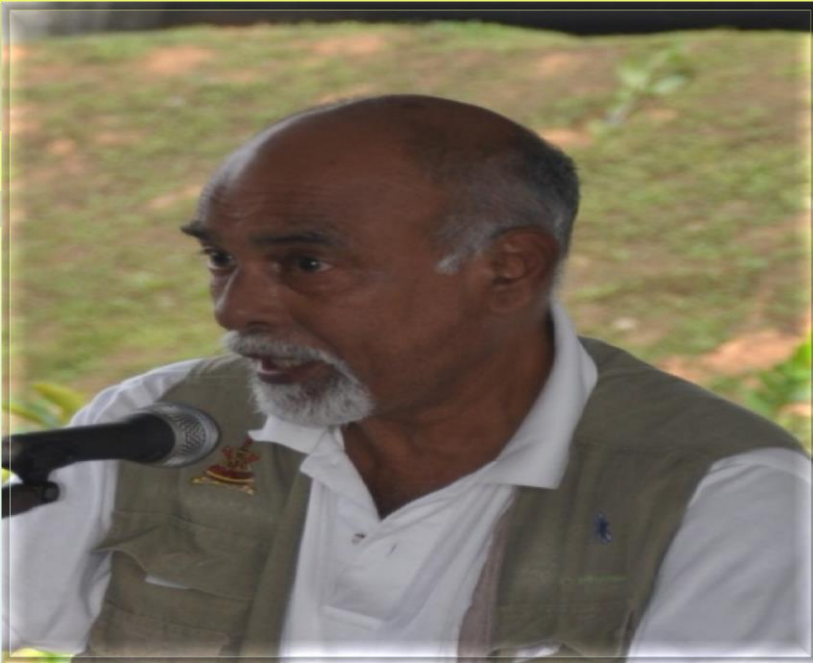
<u>Content</u>	<u>Page</u>
Introduction	3
Objectives	4
Committee Members	5
The Shah Alam River & Trees For Life	5
The Spirit Of Volunterism	6
The Shah Alam Trees For Life 2010 – 2014	6
Shah Alam Trees for Life 2010	7
Shah Alam Trees For Life 2011	8
Shah Alam Trees For Life 2012	9
Shah Alam Trees For Life 2013	10
Shah Alam Trees For Life 2014	11
Empowering The NGO's	11
Corporate Social Responsibility	12
Shah Alam Trees For Life – The Impact	13
Program Details	14 – 17
Calender of Activities	18 - 27
How To Get Involved	28 - 29
Appendix 1 - 3	30 - 37



INTRODUCTION

How it started?

The Shah Alam Trees for Life was inspired by the late Mr. Krishna Moorthy of the Sathya Sai Baba Group following an article in The STAR of Shah Alam Tree Planting Program on the 4th June 2010.



Picture 1 : Late Mr. Krishna Moorthy from Sathya Sai Baba Group

Akhbar : **THE STAR**
Tarikh : **4/6/2010**

A nature inspired city beckons

4/6/2010 Star

MBSA plans to plant 80,000 trees by year-end

THE Shah Alam City Council (MBSA) is targeting to plant 80,000 trees throughout this year to make Shah Alam a "city within a park" with a beautiful and pleasant landscape.

Last year, the council planted a total of 128,392 trees, and is confident that it would be able to surpass the target set by the state government this year.

The tree-planting and beautifying efforts are carried out by the council's Parks and Recreation Department in open spaces, playgrounds and public parks in areas under the MBSA's jurisdiction.

Various developers have stepped in to assist in the efforts to green Shah Alam by planting trees in housing areas, while residents associations, non-governmental organisations, and the corporate and private sectors were encouraged to emulate

such efforts.

Shah Alam mayor Datuk Mazalan Md Noor kicked off this year's tree-planting programme with the residents' representative council (MPP) at Taman TIDI Jaya, Section U2, Shah Alam.

Some 63 trees were planted around the housing area's futsal field, including plants from the busida and golden chain species.

To inculcate a sense of love and responsibility for the environment, students from SRK and SMK TIDI Jaya were also invited.

Also present was MPP Zone 16 chairman and MBSA councillor Izhah Hashim.

The tree-planting programme with MPPs is scheduled to be carried out in other MPP zones and community participation is encouraged.

The plants would be maintained and cared for by the Park and Recreation Department.

OBJECTIVES



**Picture 2 : Sungai Damansara, Seksyen 13,
The first until the fourth program location in 2010**



**Picture 3 : First Program With DHL (M) Sdn. Bhd.
at Sungai Damansara, Seksyen 13**

- **To propagate the spirit of volunteerism in caring for the environment.**
- **To empower non-governmental organization and green activists to spearhead the Shah Alam green initiative.**
- **To promote and encourage Corporate Social Responsibilities 'CSR'.**
- **To reduce carbon footprints.**
- **To provide platform for social networking.**
- **To create a sense of belonging among residents of Shah Alam to care for their surrounding trees and greenery.**

✓ On the 29th of July 2010 the Shah Alam City Council (MBSA), the State Irrigation & Drainage Dept. (JPS) and the Sathya Sai Baba Organisation in collaboration with the Forest Research Institute of Malaysia (FRIM), the Landscape Architect institute of Malaysia (ILAM), and the State Forestry Department sponsored the 'River & Trees for Life 2010', a tree planting exercise along the Damansara River corridors in section 13, Shah Alam.

The Shah Alam River & Trees for Life made its debut on 26th of September. Subsequently of thus , 3 other planting sessions were made on the 3rd of October, the 10th of October and the 17th of October in 2010.

2,400 pokok ditanam di pesisir Sungai Damansara

SHAH ALAM: Program penanaman pokok secara besar-besaran di pesisir Sungai Damansara, di sini, anjuran Majlis Bandaraya Shah Alam (MBSA) dan badan kerajaan (NGO) bukan saja mampu merealisasikan impian menjadikan Shah Alam sebagai bandar dalam taman, malah turut mendedahkan orang ramai terutama golongan muda supaya lebih peka terhadap penjagaan alam sekitar.



KENANGAN...peserta program penanaman pokok di pesisiran Sungai Damansara, semalam.

Pegawai Perhubungan Awam MBSA, Shahrin Ahmad, berkata program penanaman pokok di pesisiran Sungai Damansara, berhampan kampus Management & Science University (MSU) di Seksyen 13, di sini, di-

adakan bersama NGO yang mempunyai matlamat dan misi sama dengan MBSA iaitu memastikan kawasan perbandaran, khususnya tempat awam sentiasa hijau. Menurutnya, pada program

itu 2,400 pokok daripada 13 spesies ditanam di pesisir sungai. "MBSA percaya sasaran untuk menanam 80,000 pokok sepanjang tahun ini akan tercapai dan matlamat untuk

MBSA perhebat tanam pokok, kekalkan kehijauan

SHAH ALAM: Komited menjadikan Shah Alam sebagai bandar dalam taman, Majlis Bandaraya Shah Alam (MBSA) memperkukuhkan komitmen dengan penanaman 2,400 pokok pelbagai spesies pada Program Penanaman Pokok Secara Besar-Besaran di pesisir Sungai Damansara di Seksyen 13, baru-baru ini. Pegawai Perhubungan Awam MBSA, Shahrin Ahmad, berkata program ini adalah usaha bersama pertubuhan bukan kerajaan (NGO) yang mempunyai misi sama dengan MBSA. "Metham kami ialah bagi memastikan kawasan perbandaran ini utama tempat awam sentiasa hijau dan ditanam dengan pokok bersestiaan," katanya. Hadis sama, Pengarah

Jabatan Taman dan Rekreasi, MBSA serta wakil syarikat korporat dan NPO, MBSA dengan kerjasama Jabatan Persekitaran dan Sains dan bersama NGO iaitu Majlis Pusat Sathya Sai India, Rotary Club dan Kumpulan Pasiranti dari Kolej Taylor dan Universiti Teknologi Mara (UTM). Antara 13 spesies pokok yang ditanam ialah jenis salak (Garcinia sp), medang feja (Cinnamomum iners), manggis lutan (Garcinia hombroniana), bebrus (Chromola laevis) dan ketul paku (Syzgium cumini). Shahrin berkata, DHL Malaysia, antara syarikat yang menyumbangkan peralatan untuk penanaman pokok seperti cangkul, kereta sorong, sarung tangan serta alat-alat lain akan dan mahu untuk 500 peserta.

Katanya, golongan muda harus ditubuhkan dengan aktiviti berkecuali penanaman pokok seperti agar mereka lebih peka dengan isu persekitaran apabila dewasa kelak dan tidak memusnahkan alam sekitar dengan sewenang-wenangnya. Melalui usaha penanaman pokok yang berterusan dengan kerjasama baik daripada persekutuan, syarikat korporat dan NGO lainnya, MBSA berhasrat untuk memulakan 80,000 pokok sepanjang tahun ini akan dicapai. "Sasaran 80,000 penanaman pokok adalah sasaran ditetapkan kerajaan negeri kepada pihak Bersejarah Persekitaran (DPT) di Selangor. "Setinggi 1000 itu, MBSA mahu ada 48,000 batang pokok dan yakin dapat melengkapkan

program penanaman pokok yang ditetapkan kerajaan negeri, katanya. Beliau berkata, usaha penanaman pokok dan pemertanian kawasan ini dilakukan oleh Jabatan Taman dan Rekreasi, MBSA melalui program penanaman pokok di kawasan-kawasan di kawasan lapangan, petang perumahan dan kawasan awam di kawasan perbandaran MBSA. Katanya, usaha memelihara bandar raya di bawah piagam bandar yang memastikan pokok dan tumbuhan hijau di kawasan perumahan yang sedang dibangunkan. MBSA juga mengagilkan sektor korporat dan swasta mengagilkan individu, firma dengan menanam pokok dan mengagilkan persekitaran masing-masing hendaklah yang hijau itu.



SYARIKAT DHL Malaysia bergambar kenangan pada Program Tanam Pokok secara besar-besaran di Sungai Damansara, Shah Alam baru-baru ini.



PESERTA menanam pelbagai spesies tanaman pada Program Tanam Pokok secara besar-besaran di Sungai Damansara, Shah Alam baru-baru ini.

THE SPIRIT OF VOLUNTEERISM

- **The Shah Alam Trees for Life has become the platform to embracing the younger citizens of the country from primary schools, high schools and colleges to contribute in the greening of our urban areas.**

THE SHAH ALAM TREES FOR LIFE 2010 - 2014

- **The SAT4L had seen 8,574 volunteers converged to the 29 programs.**
- **They came by the buses and individual commute. The corporate social responsibility has gone beyond corporation to individuals.**
- **The company TNT and other private institutions make it mandatory for their employees to have a 12 hours per year community social responsibility.**



SHAH ALAM TREES FOR LIFE 2010



The launching of the Shah Alam Trees for Life on the 26th of September invites 480 volunteers from 14 organisations.

The organisations involved are DHL Malaysia, Sathya Sai baba, UiTM, Taylor College, Methodist Girl Secondary School of Jln. Ipoh, Sunway College, Eco Warriors, UKM, JPS Petaling, USJ Rotary Club, PETRONAS Gas Berhad, Malaya University, Buddhist Association dan Tun Abdul Razak University.

A total of 2400 trees were planted.

As the main sponsor of the 1st program DHL Malaysia handed a cheque of RM 4,000.00 to the Mayor of Shah Alam

The next 3 subsequent planting sessions which were conducted along the Damansara River corridors saw 734 volunteers planting a total of 4,017 trees.

The corporate sponsors for the three events are Opcom Holding Berhad, Worldwide Resins & Chemical and PETRONAS Gas Berhad.

SHAH ALAM TREES FOR LIFE 2011



Sg. Damansara, Section 13
Partner: Xyratex (M) Sdn Bhd
24th April 2011 – (1,900 trees, 511 participants)



Taman Tasik Shah Alam
Partner: Nestle Manufacturing (M)
12th June 2011 – (575 trees, 187 participants)



Sg. Damansara, Section 13
Partner: Sime Darby Property
24th July 2011 – (1,000 trees, 350 participants)



Bukit Jelutong, Section U8.
Partner: Maxis Broadband Sdn. Bhd.
20th Nov. 2011 – (1,500 trees, 210 participants)



Sg. Damansara, Section 13
Partner: Paramount Property Dev.
22th May 2011 – (1,932 trees, 580 participants)



Sg. Damansara, Section 13
Partner: Xyratex (M) Sdn Bhd
26th June 2011 – (1,300 trees, 275 participants)



Sisiran Sg. Renggam, Section 15.
Partner: Maxis Broadband Sdn. Bhd.
25th Sept. 2011 – (1,886 trees, 354 participants)



Taman Tasik Section 7
Partner: Pokka Ace
18th December 2011 – (3,000 trees, 333 participants)

SHAH ALAM TREES FOR LIFE 2012



Sungai Renggam
Partner: Kumpulan Media Karangkraf
26th February 2012 – (2,500 trees, 268 participants)



Sg Damansara, Section 13
Partner: Xyratex Malaysia
25th March 2012 – (2,500 trees, 348 participants)



SPACE U8, Eco-Mall, Section U8
Partner: Space U8
29th April 2012 – (634 trees, 242 participants)



Taman Tasik Kota Kemuning
Partner: Taylor's College
27th May 2012 – (2,500 trees, 308 participants)



Sg. Damansara, Section 13
Partner: Visiber
24th June 2012 – (2,000 trees, 339 participants)



Sg. Damansara, Section 13
Partner: Xyratex Malaysia
14th July 2012 – (1500 trees, 224 participants)



Kolam Takungan Seksyen 5
Partner: Sime Darby Property Berhad
15th Sept 2012 – (500 trees, 132 peoples)



Persiaran Kayangan
Partner: KPJ Tawakkal Specialist Hosp.
24th Nov 2012 – (1,251 trees, 291 peoples)



Kolam Utara Bukit Jelutong
Partner: KPJ Tawakkal Specialist Hosp.
15th Dec. 2012 - (1,030 trees, 163 peoples)

SHAH ALAM TREES FOR LIFE 2013



IN REMEMBRANCE OF MR. MOORTHY@ SUNGAI RENGGA
 Partner: Kumpulan Media Karangraf
 24th March 2013 – (550 trees, 159 participants)



LEBUHRAYA KEMUNING – SHAH ALAM (LKSA)
 Partner: Prolintas/ LKSA, Xyratex Malaysia
 18th May 2013 – (2,533 trees, 433 participants)



Stadium Shah Alam
 Partner: UMW Toyota Motor Sdn Bhd
 07th Sept 2013– (635 trees, 214 participants)



Dataran Kemerdekaan Shah Alam
 Partner: KPJ Tawakkal Specialist Hospital
 26th Oct 2013– (950 trees, 234 participants)



Trek Basikal, Seksyen 4
 Partner: KPJ Tawakkal Specialist Hospital
 21st April 2013 – (1,786 trees, 563 participants)



Stadium Shah Alam
 Partner: KPJ Tawakkal Specialist Hospital
 29th June 2013– (1560 trees, 319 participants)



Simpang Sri Muda-Bukit Kemuning
 Partner: Telekom Malaysia Berhad
 22nd Sept 2013 – (992 trees, 86 participants)



Dataran Kemerdekaan Shah Alam
 Partner: UMW Corporation Sdn Bhd, Xyratex Malaysia
 14th Dec 2013 – (1,400 trees, 400 participants)

CORPORATE SOCIAL RESPONSIBILITY

- The last 4 years of its inception, the Shah Alam Trees For Life has gauged the partnership of 18 corporations, not only to fund the program, but also the supply of score of volunteers.
- The followings are our partner to the Shah Alam greening initiative:-



SHAH ALAM TREES FOR LIFE – THE IMPACT

- **The Shah Alam Trees for Life has laid the structural foundation for the Shah Alam green corridors. A total of 18,549 trees had been planted along the Damansara River Corridors that traverse the eastern part of Shah Alam.**
- **Another 25,781 trees has reinforced our existing green corridors in Section 24, the Persiaran Kayangan green , the Bukit SUK Parks and the city centre. Of the 44,330 trees planted, 30 percent of those are fruit trees rambutan, pulasan, rambai, pauh, sentul, butter trees and many others that alternate our shade trees that lined our green corridors and our main boulevards.**
- **The Shah Alam greenways will not only become the lungs that filters our urban air, moderate our city temperature, repels the wind velocity, but also the hub of fruits for the urban citizen and wildlife.**



PROGRAM DETAILS

SHAH ALAM TREES FOR LIFE 2010						
No.	Location	Date	No. of trees	No. of Volunteers	Sponsors	Amount
1	Damansara River, Sect. 13	26 th Sept. 2010	2400	480	DHL (M)	4,000.00
2	Damansara River, Sect. 13	3 rd Oct. 2010	800	124	OPCOM Holding Berhad	1,000.00
3	Damansara River, Sect. 13	10 th Oct. 2010	1200	208	Worldwide Resins & Chemical	1,000.00
4	Damansara River, Sect. 13	17 th Oct. 2010	2017	402	PETRONAS Gas Berhad	1,000.00
Total			6,417	1,214		7,000.00

PROGRAM DETAILS

SHAH ALAM TREES FOR LIFE 2011						
1	Damansara River, Sect. 13	24 th Apr. 2011	1900	511	Xyratex (M) Sdn Bhd	4,000.00
2	Damansara River, Sect. 13	22 nd May 2011	1932	580	Paramount Property Dev.	3,000.00
3	DUSUN @ TAMAN TASIK SHAH ALAM ®	12 th June 2011	575	187	Nestl'e Manufacturing (M)	1,000.00
4	Damansara River, Sect. 13	26 th June 2011	1300	275	Xyratex (M) Sdn Bhd	2,000.00
5	Damansara River, Sect. 13	24 th July 2011	1000	350	Sime Darby Property Berhad	5,000.00
6	Renggam River, Sect. 15	25 th Sept. 2011	1885	354	Maxis Broadband Sdn. Bhd	30,000.00
7	DUSUN KOMUNITI @ JELUTONG, SEKSYEN. U8 ®	20 th Nov. 2011	1500	210	Maxis Broadband Sdn. Bhd	60,000.00
8	DUSUN @ TASIK SEKSYEN 7 ®	18 th Dec. 2011	3000	333	Pokka Ace	10,000.00
Total			13,092	2,800		115,000.00

PROGRAM DETAILS

SHAH ALAM TREES FOR LIFE 2012						
1	Renggam River, Sect. 15	26 th Feb. 2012	2500	268	Kumpulan Media Karang kraf	1,500.00
2	Damansara River, Sect. 13	25 th March 2012	2500	348	Xyratex Malaysia	4,000.00
3	SPACE U8 Eco- Mall, Space U8, Sect. U8	29 th Apr. 2012	634	242	Space U8	5,000.00
4	Kota Kemuning Lake Garden	27 th May 2012	2500	308	Taylor's College	220.00
5	Damansara River, Sect. 13	24 th June 2012	2000	339	Visiber	10,000.00
6	Damansara River, Sect. 13	14 th July 2012	1500	224	Xyratex Malaysia	3,000.00
7	CELEBRATING MALAYSIA DAY @ SECTION 5 RETENTION POND ®	15 th Sept. 2012	500	132	Sime Darby Property Berhad	10,000.00
8	Persiaran Kayangan	24 th Nov. 2012	1251	291	KPJ Tawakkal Specialist Hospital	6,000.00
9	Bukit Jelutong North Pond, Sect. U8	15 th Dec. 2012	1030	163	KPJ Tawakkal Specialist Hospital	6,000.00
Total			14,415	2,152		45,720.00

PROGRAM DETAILS

SHAH ALAM TREES FOR LIFE 2013						
1	IN REMEMBRANCE OF MR. MOORTHY@ RENGAM RIVER ®	24 th March 2013	550	159	Kumpulan Media Karangkrak	1,000.00
2	Section 4 Bicycle Track	21 st April 2013	1786	563	KPJ Tawakkal Specialist Hospital	6,000.00
3	LEBUHRAYA KEMUNING - SHAH ALAM (LKSA)	18 th May 2013	2533	433	Prolintas / LKSA	5,000.00
					Xyratex Malaysia	5,000.00
4	SHAH ALAM STADIUM	29 th June 2013	1560	319	KPJ Tawakkal Specialist Hospital	6,000.00
5	SHAH ALAM STADIUM	7 th Sept. 2013	635	214	UMW Toyota Motor Sdn Bhd	500.00
6	SRI MUDA - BUKIT KEMUNING JUNCTION	22 nd Sept. 2013	992	86	Telekom Malaysia Berhad	1,000.00
7	D'TRN KEMERDEKAAN SHAH ALAM	26 th Oct. 2013	950	234	KPJ Tawakkal Specialist Hospital	6,000.00
8	D'TRN KEMERDEKAAN SHAH ALAM	14 th Dec 2013	1400	400	UMW Corp. Sdn Bhd	7,000.00
					Xyratex (M)	2,500.00
Total			10,406	2,408		40,000.00

CALENDER OF ACTIVITIES 2014

- **10 proposed programs for the year 2014 are as follows:-**

- 1. Date : 19th April 2014**
- **Location : Jalan U11/3, Bukit Bandaraya, Seksyen U11.**
(Children playground, football field and retention pond area)
- **Acreage : 9.83 acres (1.25 acres water body)**
- **No. of tree : 1,000 trees**



**Google Maps 1 :
Bukit Bandaraya,
Seksyen U11,
Shah Alam.**

CALENDER OF ACTIVITIES 2014

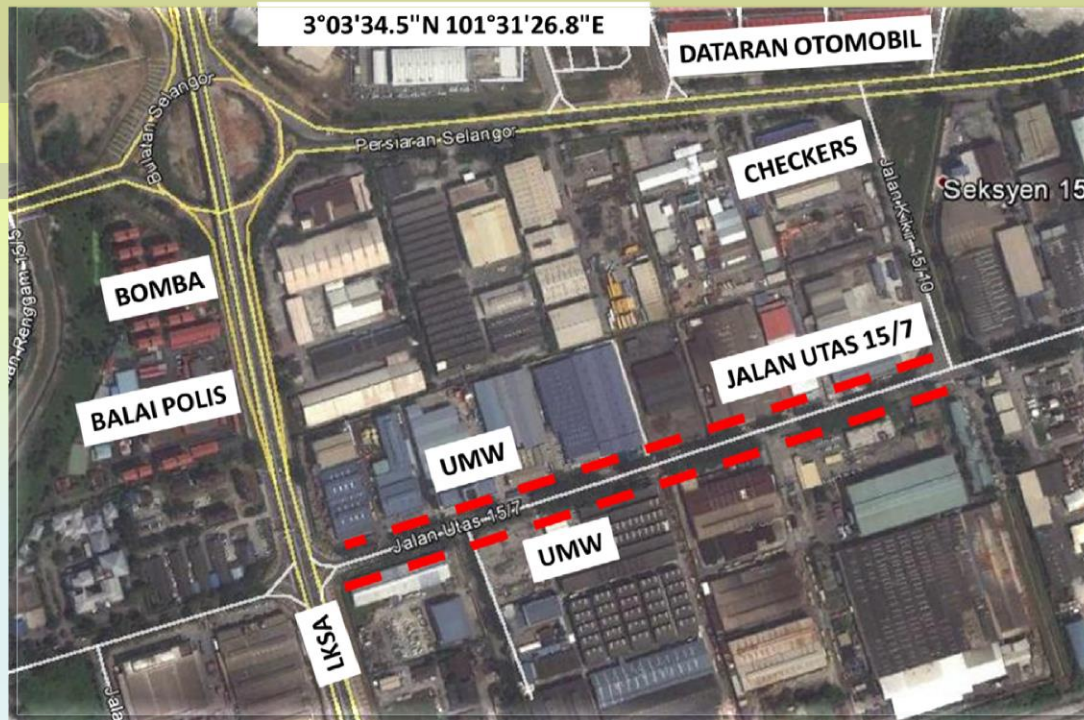
- 2. Date** : 24th May 2014
- Location** : Persiaran Hemisfera, Seksyen U5.
(Football field area)
- Acreage** : 4.94 acres
- No. of tree** : 1,190 trees



Google Maps 2 :
Persiaran Hemisfera,
Seksyen U5, Shah Alam.

CALENDER OF ACTIVITIES 2014

- 3. Date** : 7th June 2014
- **Location** : Jalan Utas 15/7, Seksyen 15.
(Football field area)
- **Length** : 0.63 km X 2
- **No. of tree** : 420 trees



Google Maps 3 :
Jalan Utas 15/7,
Seksyen 15,
Shah Alam.

CALENDER OF ACTIVITIES 2014

- 4. Date** : 21st June 2014
- Location** : Jalan Bukit Kemuning, Seksyen 25.
(LKSA Roundabout)
- Acreage** : 7.00 acres
- No. of tree** : 1,680 trees



Google Maps 4 :
Jln. Bkt. Kemuning,
Seksyen 25,
Shah Alam.

CALENDER OF ACTIVITIES 2014

- 5. Date** : 13th September 2014
- **Location** : Persiaran Permai, Seksyen 7.
(Retention Pond)
 - **Acreage** : 8.91 acres (4.84 acres water body)
 - **No. of tree** : 980 trees



Google Maps 5 :
Persiaran Permai,
Seksyen 7, Shah Alam.

CALENDER OF ACTIVITIES 2014

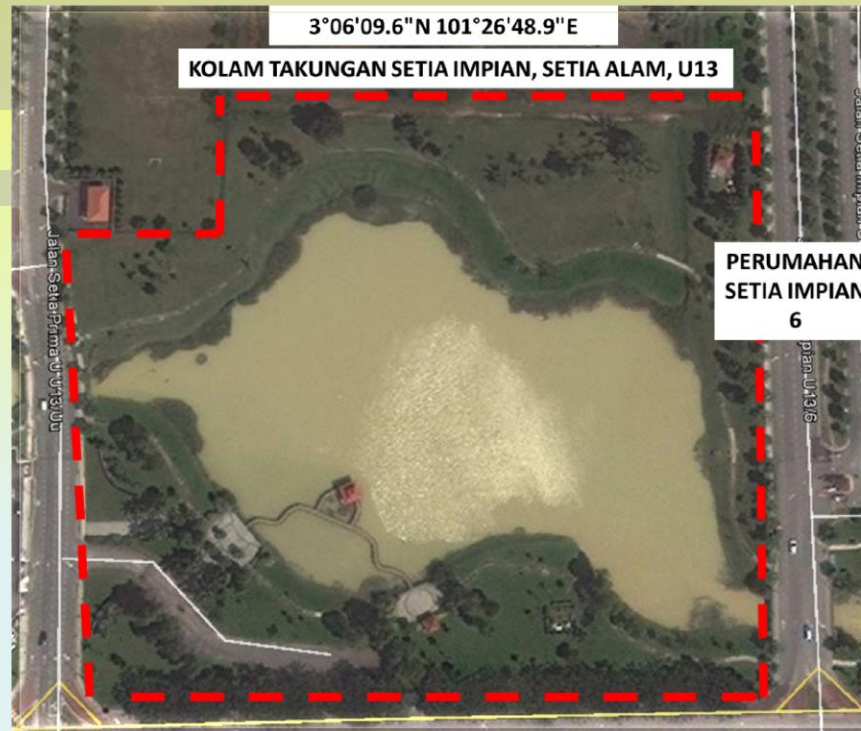
- 6. Date** : 11th October 2014
- Location** : Persiaran Setia Indah, Seksyen U13.
(Retention Pond)
- Acreage** : 14.18 acres (4.42 acres water body)
- No. of tree** : 2,340 trees



Google Maps 6 :
Persiaran Setia Indah,
Seksyen U13,
Shah Alam.

CALENDER OF ACTIVITIES 2014

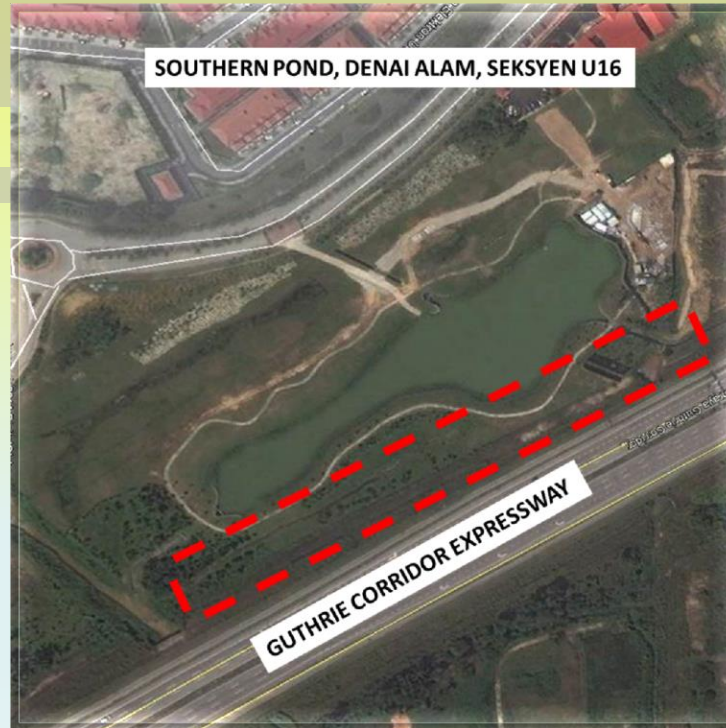
- 7. Date** : 25th October 2014
- **Location** : Persiaran Setia Impian, Seksyen U13.
(Retention Pond)
 - **Acreage** : 11.34 acres (3.83 acres water body)
 - **No. of tree** : 1,800 trees



Google Maps 7 :
Persiaran Setia Impian,
Seksyen U13,
Shah Alam.

CALENDER OF ACTIVITIES 2014

- 8. Date** : 15th November 2014
- **Location** : Denai Alam Southern Pond, Seksyen U16.
(Retention Pond)
- **Acreage** : 10.75 acres (3.43 acres water body)
- **No. of tree** : 1,760 trees



Google Maps 8 :
Denai Alam,
Seksyen U16, Shah Alam.

CALENDER OF ACTIVITIES 2014

- 9. Date** : **29th November 2014**
- **Location** : **Taman Tasik Kota Kemuning, Seksyen 31.
(Green Area Opposite Mac Donalds)**
- **Acreage** : **7.54 acres**
- **No. of tree** : **1,810 trees**



Google Maps 9 :
Persiaran Anggerik Vanilla,
Seksyen 31, Shah Alam.

CALENDER OF ACTIVITIES 2014

- 10. Date** : 20th December 2014
- o Location** : D' Kayangan, Seksyen 13.
(Retention Pond)
- o Acreage** : 10.16 acres (1.74 acres water body)
- o No. of tree** : 2,020 trees



Google Maps 10 :
D' Kayangan,
Seksyen 13,
Shah Alam.

HOW TO GET INVOLVED

- **Individual Participation**
 - **Group Participation**
- **Corporate Bodies Involvement**

CORPORATE PARTNERSHIP CATEGORIES

1. EVENT PARTNERS

- **All programs through the year 2014**
- **Event partnership > RM 60,000**
- **Company logo display on all promotion materials for year 2014**

2. PROGRAM PARTNERS

- **Any one program**
- **Sponsor per program = RM 30,000**
- **Company logo display on program promotion materials**

3. PROGRAM CO-PARTNERS

- **Any one program**
- **Sponsor per program = RM 15,000**
- **Company logo display on program promotion materials**



PARTNERSHIP FORM

- **Program Cost : 1,000 trees X RM 30.00 = RM 30,000.00**
- **Event Cost : RM 30,000.00 X 10 programs = RM 300,000.00**

PARTNERSHIP CATEGORIES

EVENT PARTNERS

RM 60,000

PROGRAM PARTNERS

RM 30,000

PROGRAM CO-PARTNERS

RM 15,000

I hereby agree to contribute the amount mentioned above as partner to the program 'Shah Alam Trees For Life'

Regards :

Company stamp :

Name :

*** Any inquiries, please contact Aida at 03-5522835 or fax us at 03-55132051**



APPENDIX 1



PROGRAM ITINERARY

PROGRAM BEKERJA UNTUK DUNIA 'A CORPORATE SOCIAL RESPONSIBILITY' – 'MBSA-UMW SHAH ALAM TREES FOR LIFE 2014'

7.30 pagi	-	Volunteers arrival and registration
	-	Coaching Kids' by Mr. Sulaiman Gerrard (Eco-Warriors)
	-	'Story Telling' about Environmental Conservation by Y.Bhg. Datin Rossiti (Individual Volunteer)
	-	Briefing on SATFL 2014 planting procedures by Mr. Bernard (Eco-warriors)
8.20 pagi	-	The arrival of invited guests, councillors, Deputy Mayor, VIP guests Department Directors, Heads of Divisions and Branch Managers
8.30 pagi	-	The arrival of Y. Bhg. Dato' Hj.Mohd Jaafar bin Hj. Mohd Atan, Mayor of Shah Alam.
	-	Light Breakfast
9.00 pagi	-	Recite Doa
	-	Welcoming speech oleh Y. Bhg. Datuk Bandar.
	-	Planting session
10.30 pagi	-	Call out
	-	Light brunch
	-	Presentation of certificates to the sponsors and participants
	-	Disperse

APPENDIX 2



TREE PLANTING MEASURES

1.



- **Make sure the size of the planting hole is twice the size of polybag**

2.



- **Cut polybag and make sure the root ball is not broken**

3.



- **Enter organic fertilizer or compost into the planting hole (1/4 of planting hole size)**



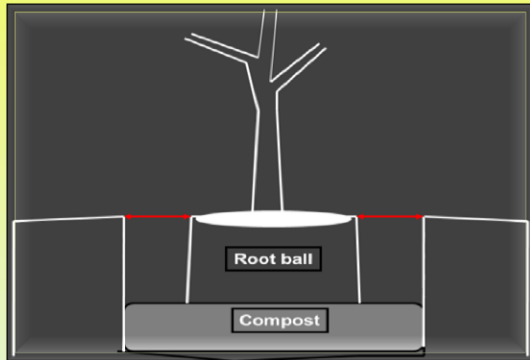
TREE PLANTING MEASURES

4.



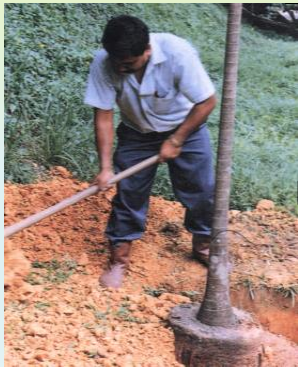
- **Place the tree into the hole and make sure it is straight**

5.



- **Make sure the ground level to the top of root ball**

6.



- **Enter the soil and make sure it is compact enough**

APPENDIX 3



BASIC TREE CARE AFTER PLANTING

1. WEEDING

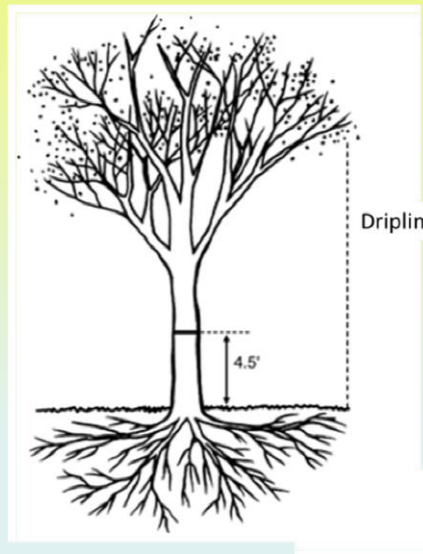
- **Weeds are plants that grow where they are not wanted.**
- **Weeding should be done regularly to keep them under control.**
- **Weeding can be done by hand or with a gardening tool.**
- **Weeding too deeply can cause dormant weed seeds to germinate and begin to sprout.**



BASIC TREE CARE AFTER PLANTING

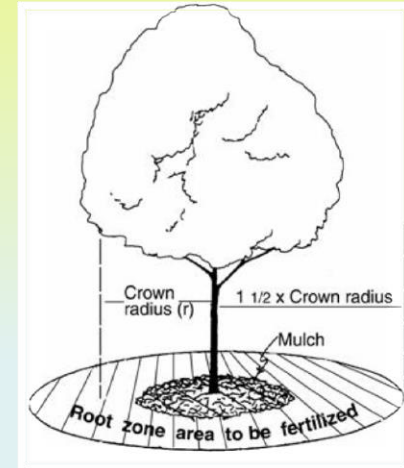
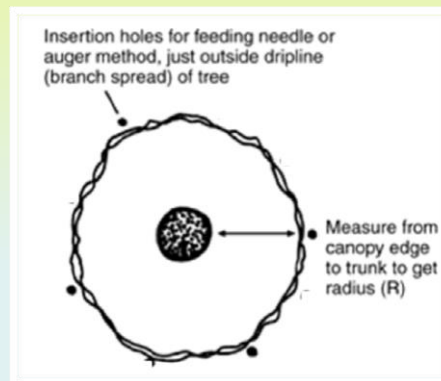
2. FERTILIZING

- **Make a holes beyond he drip line of the tree with 8 to 12 inches deep each.**
- **Apply 50 grams of fertilizer to each hole.**



Dripline

4.5'



THANK YOU

